

The market sectors where we currently provide this specialist equipment includes, Tunnelling, Energy, Aviation and Rail. Magnor Plant will look to support longer term Frameworks and Major Projects with General Plant and Equipment plus supplementary services. The provision of General Plant & Equipment on our projects covers core equipment where high levels of utilisation are guaranteed and there is confidence in transferability of the assets across our business streams and projects.

Road Rail Plant

- Full workshop facilities for servicing, repairs, major rebuild and preparation to VAB standards
- A nationwide breakdown service within a 24 hours response, seven days a week
- Backup field service teams
- Fully qualified plant engineers and fitter
- Holder of Rail Plant operating Company License (Provisional) in accordance with Network Rail Standard NR/L2/CPR/202
- Holder of a Principal Contractor License in accordance with Network Rail Standard NR/L1/2/CPR/202

Magnor Plant boasts a comprehensive range of plant and equipment to service its airport infrastructure delivery teams. This plant and equipment has been extensively deployed at both civilian and military airfields in support of Morgan Sindall's long established presence operating within this environment.

- Paving equipment
- Excavator attachments
- Sprayers and saws
- Generators, fuel tanks and lighting towers
- Vehicles and miscellaneous items.

Including TBM and Mechanised Pipe Jacking Machines.

Magnor Plant provides a comprehensive fleet of specialist tunnelling equipment and services not only for Morgan Sindall and its associated business partners but to joint ventures and external projects within the tunnelling sector.

- Our team based at Swynnerton has a specialist fleet that deals with all stages of tunnelling, from machine supply to tunnel drive completion. We have mechanical and electrical engineering resources as well as workshop departments that can handle tunnel machine overhauls and bespoke plant repairs and fabrications
- We have the capabilities to provide engineered plant solutions for your site specific needs with full logistical support
- We can offer pipejack plant packages for EPB and slurry systems. We have Iseki slurry shields from 1.2. to 1.8m and 1.95m and 2.1m internal diameter EPB TBMS to suit a wide range of ground conditions
- Magnor Plant holds a large fleet of large and small mechanised tunnel bore machines to suit a range of ground conditions.

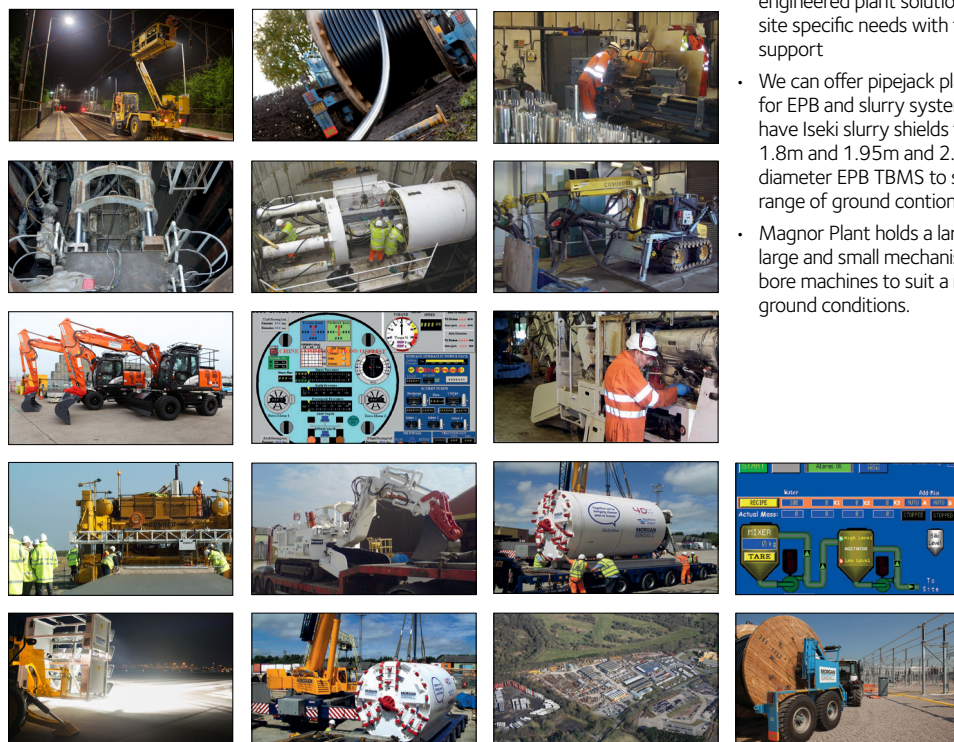
- Large winches and cable towing capabilities, towing upto max. 35T
- 10T Tracked winch.

We are able to operate across all Morgan Sindall business streams, adding increased safety, productivity, cost effectiveness and in house commercial benefits to Morgan Sindall. These include, cash retention, margin opportunity and a flexible approach to pricing when bidding contracts.

Magnor Plant has the expertise to plan and supply high voltage package sub-stations up to 2 MVA for all tunnelling and construction sectors. It has a fleet of containerised sub-stations, switch gear, transformers, distribution panels, and cables for most HV applications. Magnor Plant has the capability to design and build control cabinets including in-house PLC and HMI programming to operate reliably under rigorous conditions.

We have the capability to refurbish, test and build complex plant projects with the use of its engineering workshops and plant handling facilities.

Our large fabrication facility has the capability to handle complex plant projects, with the use of overhead cranes, plate rollers and high speed cutting machines. Linked within the workshop facility we operate a precision machine shop with a lathe, milling and drilling machines.



TRANSPORT OVERVIEW AND CAPABILITIES

The Magnor Plant Fleet Team provides a range of professional services for Morgan Sindall, ensuring the fleet remains legal, compliant and on the road.

Vehicle supply

Sourcing a full range of vehicles, plant and equipment for the customer.

- Original Equipment Manufacturer relationships
- Car Derived Van to 32t Grabs
- Electric vehicles
- Hybrid cars
- Spot Hire, Flexi-Hire, Leasing
- Plant and trailers.

Legislation and compliance

Managing fleet risk on behalf of the customer.

- CPC qualified Transport Managers
- O licence management and audits
- Drivers hours
- Motor Insurance Database (MID)
- Driver licence checks
- PCNs / fines management.

Driving instructions and training

Managing every aspect of transport for new site inductions.

- Operating Centre applications
- Vehicle and plant mobilisation / demobilisation
- Driver presentations
- Driver licensing verification
- Full vehicle handovers.

Vehicle design and selection

Providing fit for purpose vehicles and best practice in fleet operation.

- Vehicle specification and design
- Fleet utilisation and trend analysis
- Tracker driver behaviours
- Bespoke transport dashboards.

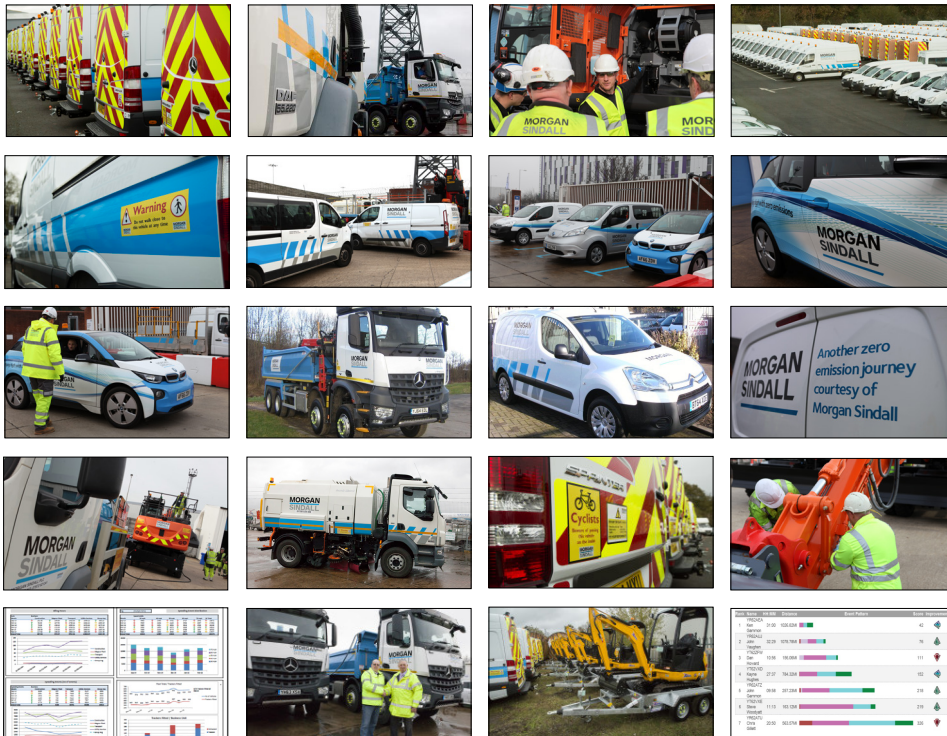
Providing the business with the safest, most environmentally friendly vehicles.

- Euro VI Trucks
- Safer Lorry Scheme
- Electric vehicles
- "Working at height".

Memberships and accreditations

Promoting Best Practice in fleet operation

- Fleet Operator Recognition Scheme (FORS)
- Freight Transport Association (FTA)
- Van Excellence
- Government Forums
- Essential Services Working Group.



WHY MAGNOR PLANT?

Our Promise to you:

- All enquires will be dealt with quickly and courteously
- Staff with a comprehensive knowledge of plant equipment
- Total fleet management, design and supply
- O Licence management on behalf of Morgan Sindall in-line with current transport legislation
- Fully equipped workshops suitable for all fabrication projects and Plant maintenance
- Complete fleet management and supply
- A team of mobile fitters nationwide
- A team of Fitters with appropriate airside and nuclear passes
- Competitive prices within the market
- Mechanical and electrical engineering resources.
- Perfect Delivery and 100% Safe fully embedded within the Magnor Plant team.

CONTACT

For all enquiries please contact:

magnorhire@morgansindall.com

01785 760022



Everyone has the right to be
100% Safe

**Perfect
Delivery**

**Supply Chain
Family**
WORKING BETTER TOGETHER

**MORGAN
SINDALL**
MAGNOR PLANT