



Flannery Plant Hire,  
Third Way, Wembley,  
Middlesex HA9 0RZ  
t: 0208 900 9290  
w: flanneryplanthire.com



# FLANNERY®

FLANNERY BROCHURE 2023



# FLANNERY®

# Contents

- About Us ..... 04
- Sustainability ..... 06
- Safety Innovations ..... 08
- Pedestrian Detection Systems ..... 09
- Digital Machine Solutions ..... 010
- People Believe In Us ..... 012
- Operator Excellence ..... 014
- Eco Operator ..... 016
- Skills Bootcamp ..... 017
- Careers With Us ..... 018
- Connecting With Communities ..... 020
- Excavators: 1 - 8 Tonne ..... 022
- Excavators: 13 - 28 Tonne ..... 024
- Excavators: 30 - 90 Tonne ..... 026
- Wheeled Excavators ..... 028
- Long Reach Excavators ..... 030
- Clamshell Telescopic Excavators ..... 032
- Backhoe Loaders ..... 034
- Articulated Dump Trucks ..... 036
- Dumpers ..... 038
- Tracked Dumpers ..... 040
- Dozers ..... 042
- Graders ..... 044
- Wheeled Loaders ..... 046
- Telehandlers ..... 048
- Tractors & Bowsers ..... 050
- Rollers ..... 052
- Attachments ..... 054
- Demolition Industry ..... 056
- Rail Industry ..... 057



## Our locations

- 01 London Depot (Head Office)**  
Flannery House, Third Way, Wembley,  
Middlesex. HA9 0RZ  
**Tel: 0208 900 9290**
- 02 Leighton Buzzard Depot**  
Watling Street, Hockliffe  
Bedfordshire. LU7 9PY  
**Tel: 0208 900 9290**
- 03 Bicester Depot**  
Twyford Road, Poundon,  
Bicester, Bucks. OX27 9BG  
**Tel: 0208 900 9290**
- 04 Newport Depot**  
Traston Road, Newport,  
Gwent. NP19 4RQ  
**Tel: 01633 530 511**
- 05 Birmingham Depot**  
Dunton Wharf, Lichfield Road,  
Curdworth. B76 9EN  
**Tel: 0121 725 9090**
- 06 Manchester Depot**  
Northbank Industrial Estate, Sorby Road,  
Irlam, Manchester. M44 5BA  
**Tel: 01925 814 394**
- 07 Penrith Depot**  
Way to Ullswater, Flusco  
Penrith. CA11 0JA  
**Tel: 0208 900 9290**
- 08 Northumberland Depot**  
Bassington Lane, Cramlington,  
Northumberland. NE23 8AD  
**Tel: 0844 8800 363**



- 09 Aberdeen Depot**  
Pitmedden Road, Dyce,  
Aberdeen. AB21 0HA  
**Tel: 01224 518 028**
- 10 Dublin Depot**  
Tinode, Blessington,  
Co Wicklow. W91 KH90  
**Tel: +353 (0) 1 458 3472**

# About Us



## We've come a long way since 1972...

We're nothing but proud to have grown our business from one machine (a JCB 3C Excavator) in 1972 to over 5,000 units in 2023. We now partner with world-leading manufacturers including Cat, Komatsu, JCB, Volvo, Bomag and Wacker Neuson.

From our first yard in Feltham, we now operate from a network of ten depots in Aberdeen, Northumberland, Penrith, Dublin, Manchester, Birmingham, Bicester, Newport, Leighton Buzzard and, of course, our purpose-built Head Office depot next to Wembley Stadium. From starting with Patrick Flannery over 50 years ago, we now have more than 1,600 operators supporting our clients on projects nationwide.

However, what we're most proud of is that we're still, at our core, a family business with strong values at its heart.

That's what has made us resilient, and will stand us in good stead for the next 50 years. Without doubt, what has kept us relevant over the years is our firm belief in and commitment to:

- People
- Safety
- Innovation and Sustainability
- Value

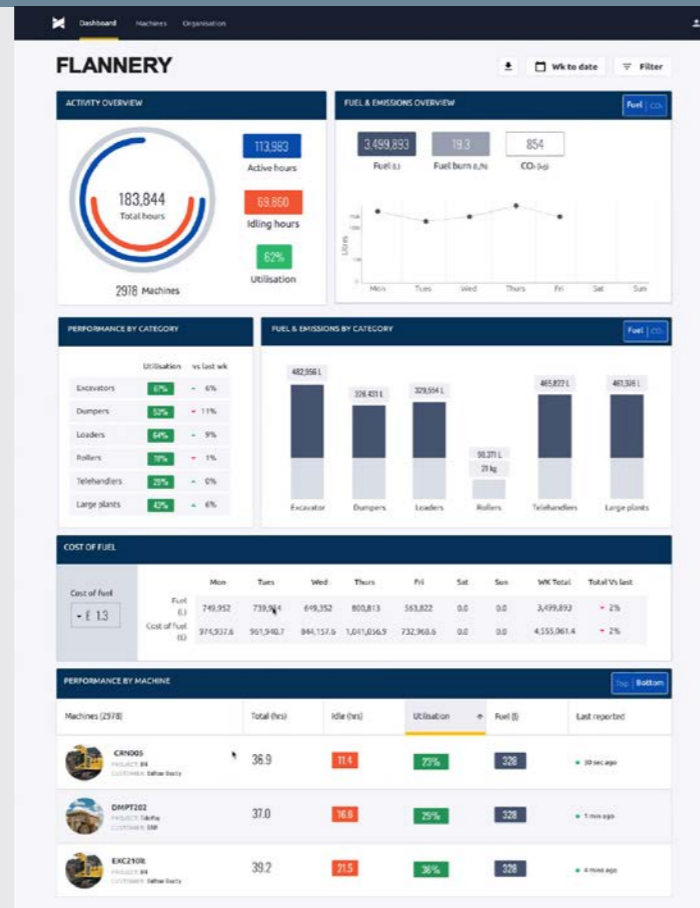
People stand at the centre of the Flannery proposition, providing excellence in service, plant standards and safety. By listening to our clients' specific requirements, keeping abreast of the latest legislation and maintaining a relentless level of investment, we truly have an unrivalled record of delivering quality and value.

As our respected manufacturers continue to develop technology, Flannery continues to innovate. Specifically with Digital Machine Solutions, finding ways to turn data into meaningful analysis and allowing customers to make hire decisions that deliver the most effective and reliable solution for them.

# Sustainability

At Flannery we are fully committed to a greener future for the construction industry - it's the only way!

We believe it is our social responsibility to invest in the latest innovative plant and equipment. Not only does this help to reduce the carbon footprint of our industry, it creates value for our customers through efficiencies in fuel savings and productivity.



The largest fleet of hybrid and electric plant for hire in the UK.



Flannery continues to invest heavily in Komatsu hybrid excavators. With enhanced fuel-saving technology, the hybrid machines provide up to 30% reduction in fuel consumption and 20% CO<sub>2</sub> reduction on site.

*"It's been more than 12 years since we added our first Komatsu hybrid excavator to the fleet. We have built the largest hybrid fleet in Europe, with a further 20 units delivered in 2022 from Komatsu alone. We are proud to continue to enhance our offer to our clients enabling them to drive a greener, more sustainable construction site of the future."*

Patrick Flannery, Managing Director - Flannery.

*"We are delighted to have agreed on another deal with Flannery to supply more market-leading Komatsu hybrid excavators as they continue their strategy of creating a multi-fuel machine fleet. Once delivered, this means Flannery will be running the largest fleet of hybrid excavators in Europe."*

Jeremy Nugent, Sales Director - Marubeni-Komatsu

## Data that drives a green agenda

Flannery have invested significant resources into the development of the latest telematics consolidated dashboard alongside technology partner MachineMax. Clients can now have a complete view of their hire fleet, by project or product type allowing analysis of idle time, fuel burn and emissions, to make real time production management decisions. The system allows clients (and Flannery) to recognise training gaps and drive real behavioural change on site.

- Machine utilisation (as a %)
- Idle time fuel usage (litres)
- Fuel used (litres)
- Fuel saving (£)
- CO<sub>2</sub> emissions (tonnes)
- Active / Idle hours
- Load count
- Average speed

Find out more via this QR code.



Flannery continue our commitment to investing in the industry's 'Net Zero' goal with our purchase of the world's first 17m Electric Telehandler from Faresin. The team at Flannery are looking forward to incorporating this new telehandler into our electric fleet, as Niall Hester, Operations Director at Flannery Plant Hire, confirms:

*"We have found the 6.26m full electric telehandler from Faresin to be very popular with customers, and since purchasing the first machine in 2020, we've bought a further five units, having proven themselves in the field."*

*All of the data from the electric telehandlers is now visible through the MachineMax dashboard for us and our customers. These machines are working on high-profile projects such as HS2, Thames Tideway and Highways England projects. The feedback has been very positive."*

*Given our experience to date with the smaller electric machines, we're confident that the new 17m telehandler*



*will perform just as well. We're delighted to be part of its introduction to the market, with our purchase of the world's first at Bauma 2022."*



# Safety Innovations

Here at Flannery we are proactive when it comes to plant safety and work in partnership with our suppliers and clients trialling and developing new initiatives.

## OperateSAFE Campaign

As part of our safety program, all Flannery operators are issued with an OperateSAFE card as part of their on-boarding. This card empowers every Flannery employee to **SPEAK UP & STOP WORK** if they see unsafe acts or conditions.

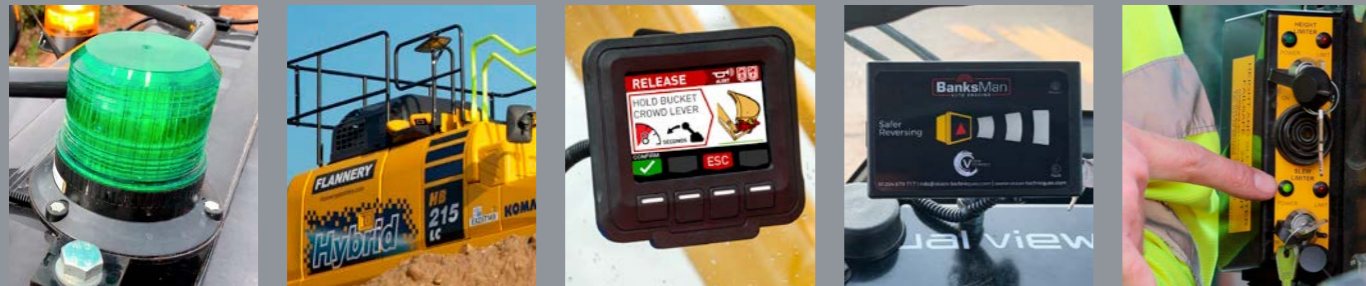


## Leica PA10 Personal Aid

In conjunction with Leica GeoSystems, Flannery now provides a real-time safety awareness solution for the entire construction site to increase worker safety and visibility to prevent collisions. The personal alert solution and collision avoidance technology means site staff are alerted through audio, visual and vibrations, meaning workers are more aware and safer than ever.

## Cat Detect

Cat Detect technologies help you stay vigilant by using cameras and other sensors to improve operator's awareness of the work environment, reducing the chance of accidents and preventing unauthorised use of equipment.



### Additional safety features available include:

- Secondary dead man devices
- Miller twin-lock hitch and Miller Mate operator guidance
- Green beacon seat belt engagement warning
- Height and slew restrictors
- Virtual box / working zone
- Visual safe load indicators
- Object and person detection systems
- Zero tail swing excavators up to 40T
- FOPS and ROPS cabs
- 360-degree cameras
- Operator-facing in-cab cameras
- Operator fatigue monitoring
- Fall protection systems on plant
- Boom and dipper check valves
- High-visibility seatbelts
- High-visibility hand rails and steps
- Wheel nut markers (where appropriate)

# Pedestrian Detection Systems

Leading the hire industry in the adoption of Pedestrian Detection Systems.

## Spillard Human Detection System

We will always prioritise safety on site, and constantly seek out innovations to help us ensure that both those operating our machines, and anybody within close proximity of them, go home safely at the end of each day.

For the last 30 years, Spillard Safety Systems have been working to provide visibility aids for construction machinery. Starting out with simple solutions like convex mirrors, and leading on to more complex items such as object detection and camera systems, they have worked closely with companies like Flannery to develop ways to tackle the People Plant Interface (PPI) safety issues.

Spillard identified a risk of humans entering 'blind spots' when machines are in operation, which resulted in them

working with their suppliers to develop a form of artificial intelligence that specifically detects the human form. This camera system relays

live information to the machine operator when an individual has encroached into the pre-defined 'red zone', but to also sounds an alarm that can be heard by the individual approaching that area.

The aim is to give operators a system they can rely on to show them exactly where a person has encroached. Spillard and Flannery continue to work together and, through the power of data, give clients the ability to correct behaviours as necessary, and alert safety managers to any causes for concern.



## SiteZone Proximity Warning System (PWS)

The SiteZone Proximity Warning System is an intelligent audible and visual warning system designed to reduce the risk of vehicle-personnel collisions and can be used where the proximity of people and vehicles working together is of concern.



## Xwatch Laser Curtain

The Xwatch Laser Curtain technology prevents the machine from working outside a set working zone. Once initiated, this happens autonomously with no input from the operator.



# Digital Machine Solutions

It has never been more possible to deliver all construction projects within specification, on time and on budget.

Over the last 15 years our frequent partnerships and collaborations with leading construction companies have seen us develop our digital machine solutions offering in line with the demands of the industry we serve, and we now have unrivalled expertise in the field.



Project sites are increasingly insisting on 3D machine control for earthworks, and we know that this is just the beginning of a huge shift in the construction environment to a new focus on measurable efficiency and sustainability. Equipment and sensors both on and off the machine provide cutting-edge machine control, unrivalled project precision and optimised safety on site.



## Why digital machine control?

- Improves site safety by removing people from hazardous work zones
- Creates greener sites by reducing fuel and energy consumption and CO2 emissions
- Improves life-cycle costs by optimising workflows
- Saves time by reducing on-site surveyor reliance
- Cuts costs by reducing material reworking
- Increases machine productivity with significantly less down-time, idling and queuing
- Stay ahead of the competition



Find out more about how Flannery's Digital Machine Solutions can help streamline your site here.



## What we offer

- 2D Machine Control Guidance with Dual Grade Lasers and Tripods
- 3D GPS Machine Control Guidance offering both Radio and RTK licenced connection streams. We also offer base stations and GPS Rover hires with site setup and installation
- 3D UTS Machine Control Guidance with Total Stations for fine trimming works
- Remote support where Flannery can quickly and swiftly get you up and operational should you encounter an issue on site
- Site infrastructure 3D model conversion which can be imported locally or remotely by our support team
- Proximity warning systems
- Drone surveys of your site for accurate mapping



# People Believe In Us

Flannery equipment can be seen on many of the UK's major projects and we are proud to work with a broad range of customers. This diversity has given us a great breadth of experience across many sectors, most extensively within the infrastructure sector, focused on motorway, rail, utility and airport projects. We have increasingly become involved in the decommissioning and improvement works at a variety of Ministry of Defence sites.

## National Highways

- Machine control, GPS, connected machines
- Flannery Plant Hire sits on Plant Focus Group and leads Raising the Bar Standards
- HE Safety Leadership Award Winner

## HS2

- HS2 Inducted Operators
- PTS qualified operators
- Dedicated CITB accredited Training Centre

## Environment Agency

- Biodegradable hydraulic oil
- Hybrid and all-electric plant and equipment
- Sustainability School Gold Member and Partner



## On Innovation

*“Over the years, Flannery have continued to improve in all that they do. They’re always at the forefront of bringing the industry into the future, with a team of friendly, helpful and knowledgeable individuals across all levels of the business. They’re a company that I know will continue to succeed and I look forward to continuing to build on our working relationship.”*

Andrew Spencer, Head of Procurement & Supply Chain, Skanska UK



## On Sustainability

*“Flannery Plant Hire have played an active and leading role in sustainability in plant. Through their commitment to innovation and education, and being very active in and supportive of the Supply Chain Sustainability School, they have become a leading example of how the construction industry can be run in a way that lessens the impact to the environment whilst helping clients reduce unnecessary fuel costs and emissions.”*

James Cadman, Head of Consultancy & Carbon Action Sustainability, Supply Chain Sustainability School



## On Training and Inclusion

*“We need to do more to attract women into this sector, but we won’t achieve this kind of change or this kind of investment in the region without real partnership. What we see with Flannery and the associations they have made with some of our funded colleges and training providers is the ability to train people in the jobs we need to get the skills they need.”*

Clare Hatton, Director of Operations, Employment and Skills West Midlands Combined Authority



## Accreditations and memberships.

As part of our continuous drive to provide plant hire excellence to all our customers we have achieved a variety of industry accreditations to inspire their ongoing trust.



## On Reliability

*“Flannery have always been quick to deliver throughout all of our work together. Reliability is key in our business, and Flannery are always on hand to help us deliver our projects safely and on time.”*

Stephen Jackson, Head of Plant and Transport, O'Connor Group



# Operator Excellence



## Thumbs Up Training

We have a simple and clear People Plant Interface 'Thumbs Up' training programme, designed to educate all site personnel as to the dangers of plant and machinery on site delivered by our in-house trainer network. The 'Thumbs Up' approach is simple:



### STOP - LOOK - LISTEN - WAIT.

1. When approaching a machine, stop in eyesight of the operator and signal to **STOP**.
2. **LOOK** to see that the operator has grounded the bucket or attachment and applied the deadman handle.
3. **LISTEN** to hear the engine stop or revs drop.
4. **WAIT** for the operator to give you the thumbs up, before approaching.



## Training & skills come as standard.

Flannery pro-actively manage the health and well-being of our operators. Our Occupational Health Nurses are accredited to SEQOHS standard, with operators undergoing the appropriate 'fit for work' medical as specified by the project.

## Experienced and certified operators.

- CPCS
- CPC
- CCDO
- PTS/LUL
- EUSR
- BESC
- Highways England Safety Passport
- HS2 Inducted
- Thames Water Safety Passport
- Thames Tideway Inducted
- Specialist training including tunnel safety

## OperateSAFE Cards.

To ensure that unsafe practice is flagged without hesitation, we have introduced OperateSAFE cards. These cards act as a reminder to put safety and well-being first and empower Flannery people to **SPEAK UP & STOP ANY ACTIVITY** that could lead to harm.



## Training Videos



The training team continue to develop videos to support operators on site, from height and slew quick start guides to managing the people plant interface. You can watch them all here.

## Advanced operative health & safety training.

Safety is of paramount importance at Flannery. We continuously assess our team's safety and our clients' requirements to consistently exceed health and safety best practice. In support of this, we offer a comprehensive range of safety-based extras available across the fleet.

### PLANT OPERATORS:

In addition to holding the CPCS category for the relevant item of plant, operators also undergo on-boarding and up-skilling to include training on:

- Identification & safe use of quick hitches
- Dual View dumper familiarisation
- CPCS lifting operations
- Correct use of an excavator as a crane
- People Plant Interface
- Eco-Operator Training
- GPS Familiarisation Training
- Specific attachment familiarisation
- Carry out daily checks on specific items of plant
- Height and Slew Restrictors

### OPERATOR DATABASE:

- Live tracking of site inductions, CPCS tickets, health checks and plant familiarisation training
- The only plant hirer with a fully managed system
- Dedicated team of CPCS / NPORS Qualified Trainers to manage training needs on site

### HGV OPERATORS:

- CPC Qualified HGV drivers
- CPCS Loader Securer and Plant Movements
- Lorry driver assessment
- Loadmaster training
- STGO and non-STGO Training
- Working time directive training - incl. fatigue policy

### FITTERS:

- Trained in plant movements
- Trained in safe use of excavator as a crane
- Safe urban driving training



As a family business, people stand at the centre of our business proposition and getting everyone home safe every day is an absolute priority. Our rigorous "on-boarding" process and fully integrated database and skills matrix tracks operators' tickets and renewals using a sophisticated gap-reporting process, ensuring we remain compliant on all sites.







The Eco-Operator framework is designed to be relevant to the day-to-day use of plant on sites, setting parameters for consistent delivery that can provide evidence for improvement. The emphasis is then placed on each delegate to take personal ownership over the need to reduce emissions.



The Eco-Operator course is available now and is currently being deployed on sites across the UK.



*"This training was something new and inspiring for me personally. Very useful and relevant information that made me think what impact my work has on the environment and how I can operate more effectively to reduce idle time. I'd definitely recommend it."*

**Andrew Beaumont**, Machine Operator - Flannery

## Flannery drive behavioural change through environmental training.

The long-term goals of achieving net zero on construction sites across the UK are well communicated. Whilst there are strategies in place that indicate the future machinery and specifically fuels we may use to get there, little has been agreed on the future skills and technologies operators will be required to deploy.

The aim of the **Eco-Operator training course** is to reduce, as far as possible, emissions of current internal combustion-engine equipment through minimising engine run time and efficient use of the equipment. This requires a clear education programme, and for the past two years we have been offering and developing the Eco-Operator training module for operators, supervisors and managers.

## Plant training opportunities for new and experienced operators alike.

Flannery Plant Hire are proud to now be offering the **Skills Bootcamp in Plant Operations** as an option for new entrants looking to enter into the sector or to existing machine operators. This course is available fully funded to individuals or part funded through employers.



The Skills Bootcamp provides learners with valuable sector skills, with a guaranteed offer of an interview on completion of training. This innovative programme is changing the way that those outside the construction industry think about working within the sector. By creating a safe space and the opportunity for new entrants to come to a controlled environment and learn new skills through plant operations, the Skills Bootcamp is directly targeting the issue of needing more plant operators in the UK - making the industry a more welcoming place for people to enter. Equally, the Skills Bootcamp also provides a great opportunity to existing operators who are looking to add to their current qualifications. Through this programme, we aim to ensure that all operators on sites across the UK are



fully trained with the latest information in how to not only operate the machines for their chosen tickets, but to do so safely and sustainably.

Trainees who successfully complete the Skills Bootcamp are taught invaluable tips to work towards the industry 'Net Zero' goal, such as limiting idling time and using less fuel. This training gives operators a bigger picture for what the overall goal of the industry is. Sharing this knowledge, and allowing entrants to do so for free or partially funded by their employer, through the Skills Bootcamp is creating a high quality standard across construction sites in the UK.



Find out more about how you can add to your existing skills, or gain completely new ones, at Flannery's Skills Bootcamp via this QR code.



# Careers With Us

## Everyone is welcome at Flannery

We believe that it's the people who make the company, and we're dedicated to creating a working environment that is safe and comfortable for all of our team members across the business.



Inclusivity and diversity are important to us, we're passionate about recruiting hard-working and talented people no matter where they come from. We care about helping people succeed in their chosen career path in plant hire by giving them industry leading training and support from the experts we already have working with us. At the heart of our commitment to all recruitment and training is one phrase – 'everyone is welcome at Flannery'.

## The Operator Skills Hub

Established in 2021, the unique, purpose-built Operator Skills Hub provides innovative, future-focused training for plant operators. This helps to address the skills shortage in the construction and infrastructure sectors, providing operators with what they need to deliver efficiently on digitally enabled projects.

Our structured training and apprenticeship programmes are delivered through a blended approach of 'on' and 'off' the job training where candidates can earn while they learn. We focus on building confidence and skills with crucial training and support - we're always there to support the industry.



## Trailblazer apprenticeship scheme

At Flannery we have a successful Trailblazer apprentice scheme making use of the Operator Skills Hub and valuable hands on approach to learning and development.

Thinking of becoming an apprentice? You can read about the experience via this QR code.



# Connecting With Communities

Flannery is committed to supporting local communities and building social value. We continue to successfully engage with communities that may be directly affected by our work through skills events, charity work and sponsorship opportunities.

## Exciting the next generation

For many years now, Flannery has recognised the benefits of showing school and college students what the Plant industry is all about. Regular school and college engagement days are held at Flannery sites across the UK, where students of all ages get the chance to see the machines in action, learn about career paths, have a go in the plant simulator, and even try their hand at operating a machine.



## South & City College Partnership

South & City College and Flannery are working in partnership to attract local talent and residents to join an access training programme in general construction operations and street works. Those with an interest in plant can then progress to a specialist plant training course at the Operator Skills Hub.



## BBC Children in Need

Flannery have been proudly raising money for many years for BBC Children in Need to help support disadvantaged children and young people across the UK. Since 2019 the Flannery team have provided the DIY SOS: Big Build team with beautifully unique spotty machines for the duration of their charity builds across the UK.



Mental Health is a serious problem, and Construction Sport has been founded by experienced construction operatives who understand the demands of this tough industry. It is totally unacceptable that we currently lose two construction workers every day to suicide. At Construction Sport we truly believe that through collaboration and the power of sport we can drive positive change.



Flannery continues to raise money for construction industry charity The Lighthouse Club who provide emotional, physical and financial well-being support to construction workers and their families.

Flannery continues to raise money for construction industry charity The Lighthouse Club who provide



Since 1990, Pace has been changing the lives of children with neurodisabilities. The unique Pace approach puts the child and their family at the heart of everything we do. We run a therapy centre, as well as a specialist school in Aylesbury, and provide online resources and support.

Since 1990, Pace has been changing the lives of children with neurodisabilities.



# Excavators: 1 - 8 Tonne

## FLANNERY - VALUE ADDED

Need an alternative fuel source? Flannery can provide the all-electric JCB mini excavator.

MODEL	Machine Classification	Machine Weight (KG)	Machine Width (mm)	Machine Height (mm)	Digging Height (mm)	Dump Height (mm)	Digging Depth (mm)	Digging Reach (mm)
Wacker Neuson 803	3/4T	930	700 - 860	2261	2857	2012	1763	3028
Hitachi ZX17U-2	1.5T	1850	970 - 1280	2400	3560	2530	2170	3900
Cat 301.5	1.7T	1740	990-1300	2310	3430	2450	2340	3800
JCB 19C-1E	2T	1902	980 - 1330	2345	3667	2637	2576	3981
Hitachi ZX19U-5A	2T	1860	980 - 1280	2380	3540	2510	2190	3810
Bobcat E26	2.5T	2943	1549	2438	2997	3200	2900	4900
Hitachi ZX26U-6	2.7T	2720	1500	2430	4260	3030	2730	4710
Cat 302.7	2.7T	2670	1500	2480	4270	2950	2510	4660
Hitachi ZX29U-3	3T	3230	1550	2500	4350	3120	2890	4920
Kubota U27-4	3T	2590	1500	2430	4370	3100	2820	4630
Bobcat E45	4.5T	4634	1989	2532	5527	3800	3600	6000
Cat 305E2 CR	5T	5185	1980	2550	5440	3920	3670	5810
Hitachi ZX65USB-5A	6T	6290	2000	2540	6190	4410	4120	6420
Kubota U55-4	5T	5400	1960	2550	5665	4005	3630	5960
Cat 308E2 SBRP	8T	8400	2320	2550	6640	5010	4690	7350
Cat 308 CR	8T	8440	2300	2541	6736	4760	4108	7141

Note: Machine Weight does not include hitch



# Excavators: 13 - 28 Tonne

## FLANNERY - VALUE ADDED

360°-camera systems provide enhanced visibility and protection for all site personnel.

MODEL	Machine Classification	Machine Weight (KG)	Machine Width (mm)	Machine Height (mm)	Digging Height (mm)	Dump Height (mm)	Digging Depth (mm)	Digging Reach (mm)
Case CX145D SR	13T c/w blade	16600	2590	2820	9340	7290	6010	8740
Cat 313	13T	13900	2690	2810	8830	6420	6040	8660
Kobelco SK140	13T Knuckle Boom	15300	2690	2870	8310	5930	5220	7830
Hitachi Zaxis ZX135US-6	13T Zero Tail Swing	14300	2690	2780	9690	7220	5790	9690
Komatsu PC138US -11	13T Zero Tail Swing	14050	2590	3210	9700	7350	5900	8600
JCB 140X	14T	14521	2690	3209	8907	6411	5161	7863
Blue Badger Tunneller	14.5T	14500	2320	2791	N/A	N/A	N/A	N/A
Cat 315F L	15T Zero Tail Swing	16480	2690	3000	9640	7190	5950	8680
Cat 315	15T Zero Tail Swing	15400	2690	2960	9690	7220	5900	8690
JCB 220X	20T	22094	3090	3200	9002	6408	6096	9171
Cat 320 GC	20T	21900	3080	2960	9450	6490	6720	9860
Cat 320-07	20T	22500	3080	2960	9370	6490	6720	9860
Komatsu PC210LC-10	20T	22270	3080	3045	10000	7110	6620	9875
Komatsu HB215LC-3	20T Hybrid	23280	3080	3045	10000	7110	6620	9875
Doosan DX235LC	20T Zero Tail Swing	24300	2990	3005	10795	7950	6670	9820
Hitachi Zaxis ZX225US-6	20T Zero Tail Swing	24700	3090	3030	11230	8290	6620	10110
Komatsu PC228USLC-11	25T Zero Tail Swing	23870	3080	3240	10700	7825	6620	9875
Cat 325	25T Zero Tail Swing	27700	3080	3187	11090	7970	6700	9780
Case CX245D SR	25T Zero Tail Swing	29300	2590	2920	9690	7290	6010	9600

Note: Machine Weight does not include hitch



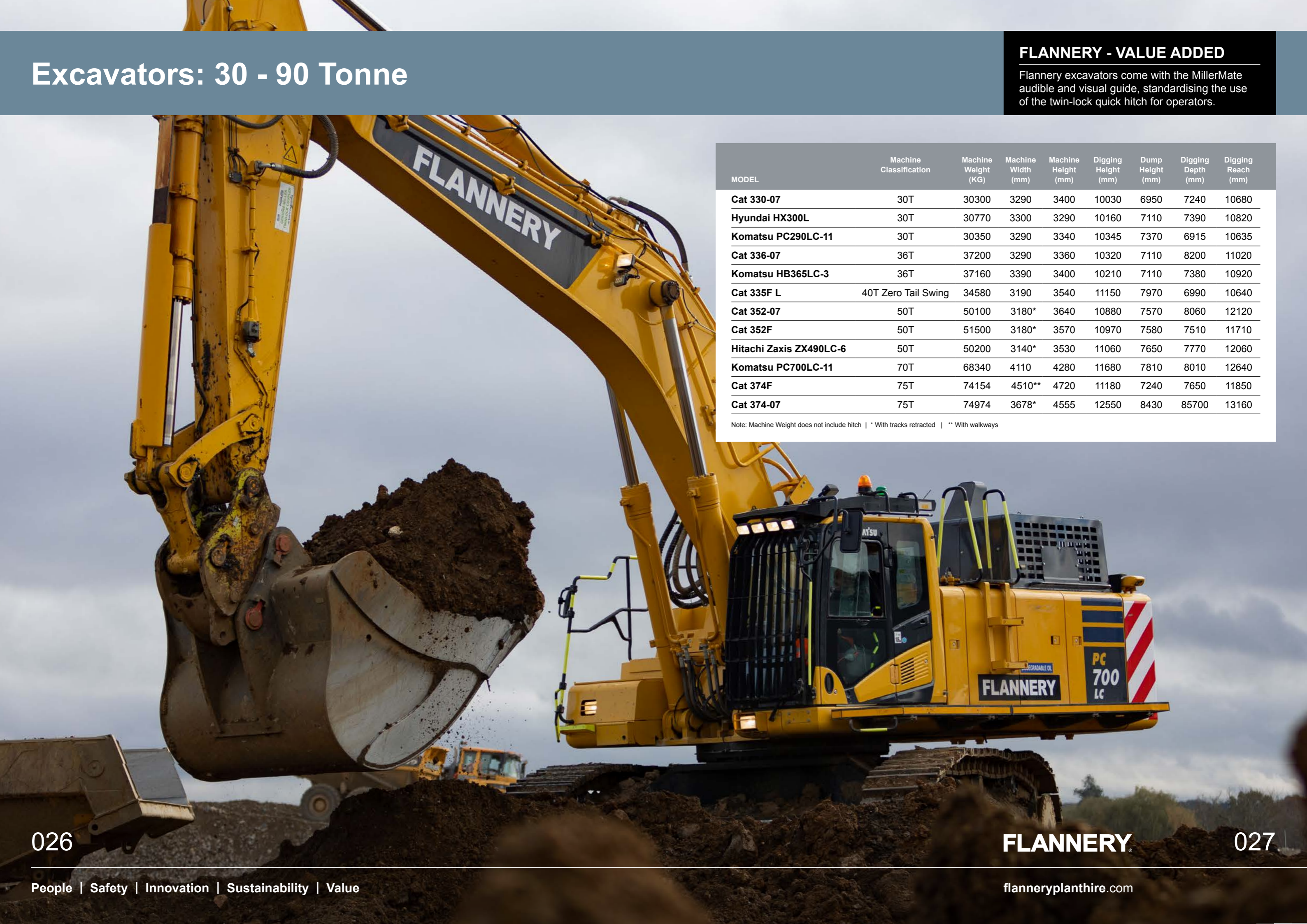
# Excavators: 30 - 90 Tonne

## FLANNERY - VALUE ADDED

Flannery excavators come with the MillerMate audible and visual guide, standardising the use of the twin-lock quick hitch for operators.

MODEL	Machine Classification	Machine Weight (KG)	Machine Width (mm)	Machine Height (mm)	Digging Height (mm)	Dump Height (mm)	Digging Depth (mm)	Digging Reach (mm)
<b>Cat 330-07</b>	30T	30300	3290	3400	10030	6950	7240	10680
<b>Hyundai HX300L</b>	30T	30770	3300	3290	10160	7110	7390	10820
<b>Komatsu PC290LC-11</b>	30T	30350	3290	3340	10345	7370	6915	10635
<b>Cat 336-07</b>	36T	37200	3290	3360	10320	7110	8200	11020
<b>Komatsu HB365LC-3</b>	36T	37160	3390	3400	10210	7110	7380	10920
<b>Cat 335F L</b>	40T Zero Tail Swing	34580	3190	3540	11150	7970	6990	10640
<b>Cat 352-07</b>	50T	50100	3180*	3640	10880	7570	8060	12120
<b>Cat 352F</b>	50T	51500	3180*	3570	10970	7580	7510	11710
<b>Hitachi Zaxis ZX490LC-6</b>	50T	50200	3140*	3530	11060	7650	7770	12060
<b>Komatsu PC700LC-11</b>	70T	68340	4110	4280	11680	7810	8010	12640
<b>Cat 374F</b>	75T	74154	4510**	4720	11180	7240	7650	11850
<b>Cat 374-07</b>	75T	74974	3678*	4555	12550	8430	85700	13160

Note: Machine Weight does not include hitch | \* With tracks retracted | \*\* With walkways



# Wheeled Excavators

## FLANNERY VALUE ADDED

Height and slew restrictors are available to help ensure a safer working envelope.

MODEL	Machine Classification	Machine Weight (KG)	Machine Width (mm)	Machine Height (mm)	Digging Height (mm)	Dump Height (mm)	Digging Depth (mm)	Digging Reach (mm)
<b>Takeuchi TB295W</b>	9T	9550	2335	2930	6000	4615	3895	6570
<b>Wacker Neuson EW65</b>	8T Zero Tail Swing	6755	2088	2775	6068	5195	3895	6318
<b>Wacker Neuson EW100</b>	10T	9241	2465	2989	7483	5346	4298	7611
<b>JCB Hydradig 110W</b>	11T Zero Tail Swing	11457	2420	2988	6445	4710	3370	6085
<b>Komatsu PW118</b>	13T Zero Tail Swing	13900	2500	3150*	8725	6649	4330	8100
<b>Komatsu PW148</b>	16T Zero Tail Swing	15710	2550	3215	9518	7133	5489	8671
<b>Cat M314F</b>	16T	15320	2545	3150	8800	6030	5630	8970
<b>Volvo EWR130E</b>	13T Zero Tail Swing	14400	2540	3050	9971	7390	5067	8733
<b>Doosan DX140W</b>	14T	1440	2500	3052	8850	6510	5020	8235
<b>Hitachi Zaxis ZX140W</b>	14T	16100	2470	3130	8410	6440	5030	8410
<b>Hitachi Zaxis ZX145W-6</b>	14T Zero Tail Swing	16400	2470	3130	8410	6440	5030	8410
<b>Volvo EWR150E</b>	15T Zero Tail Swing	17900	2540	3150	8560	5740	5070	8400
<b>Cat M315</b>	15T	17200	2540	3280	10410	7680	5580	9150
<b>Volvo EWR170E</b>	17T Zero Tail Swing	19200	2540	3150	8560	5740	5070	8400
<b>Cat M317</b>	17T	19350	2550	3320	10720	7770	5770	9390
<b>Doosan DX170W</b>	17T	18300	2450	3130	9360	6610	5830	9330
<b>Cat M316F</b>	18T	16880	2550	3300	9230	6200	5910	9360
<b>Hitachi Zaxis ZX170W-6</b>	18T	1880	2470	3130	9360	6360	5130	8500
<b>Cat M319</b>	19T	20250	2540	3360	11110	8160	6140	9610
<b>Hitachi Zaxis ZX190W-6</b>	20T	19700	2450	3130	9580	6450	5830	9400
<b>Doosan DX190-W</b>	20T	20430	2750	3134	6765	6765	5725	9255
<b>Cat M320F</b>	20T	19720	2750	3320	9095	6290	6280	9750
<b>Doosan DX210W</b>	22T	21485	2530	3141	9505	7115	55905	9705
<b>Hitachi Zaxis ZX220W-6</b>	22T	23300	2750	3320	10280	7380	6310	10070

Note: Machine Weight does not include hitch | \*3995mm to top of boom



# Long Reach Excavators

## FLANNERY - VALUE ADDED

Bio hydraulic oil is available for machines working in environmentally sensitive areas.



MODEL	Machine Classification	Machine Weight (KG)	Machine Width (mm)	Machine Height (mm)	Digging Depth (mm)	Digging Reach (mm)
Hitachi Zaxis ZX27-3	3T	2790	1500	2400	4200	6100
Cat 308E2 CR LR	8T	9576	2320	2550	4643	7673
Case CX130B LR	13T	15200	2500	2790	10130	13100
Komatsu PC138US-11 SLF	13T	15300	2690	2815	9190	12320
Cat 320-07 SLR	24T	23900	3080	2960	11540	15570
Cat 320E SLR	24T	23640	3080	3240	11690	15720
Komatsu PC240LC-11 SLF-18m	25T	28150	3080	3290	14635	18290
Case CX210D	25T	23600	3190	2380	12010	15600
Hitachi ZX330-18m	30T	36100	3390	3420	14030	18280
Cat 336 SLR-20m	36T	39676	3620	3594	16300	20300
Komatsu PC360LC-10 SLF-22m	36T	41680	3390	3470	17410	22010
Hitachi Zaxis ZX350-22m	38T	40000	3390	3160	17410	22020
Cat 340F LRE	40T	42700	3670	3600	13050	18080
Cat 352F LRE	58T	59400	4510	3740	13040	19640

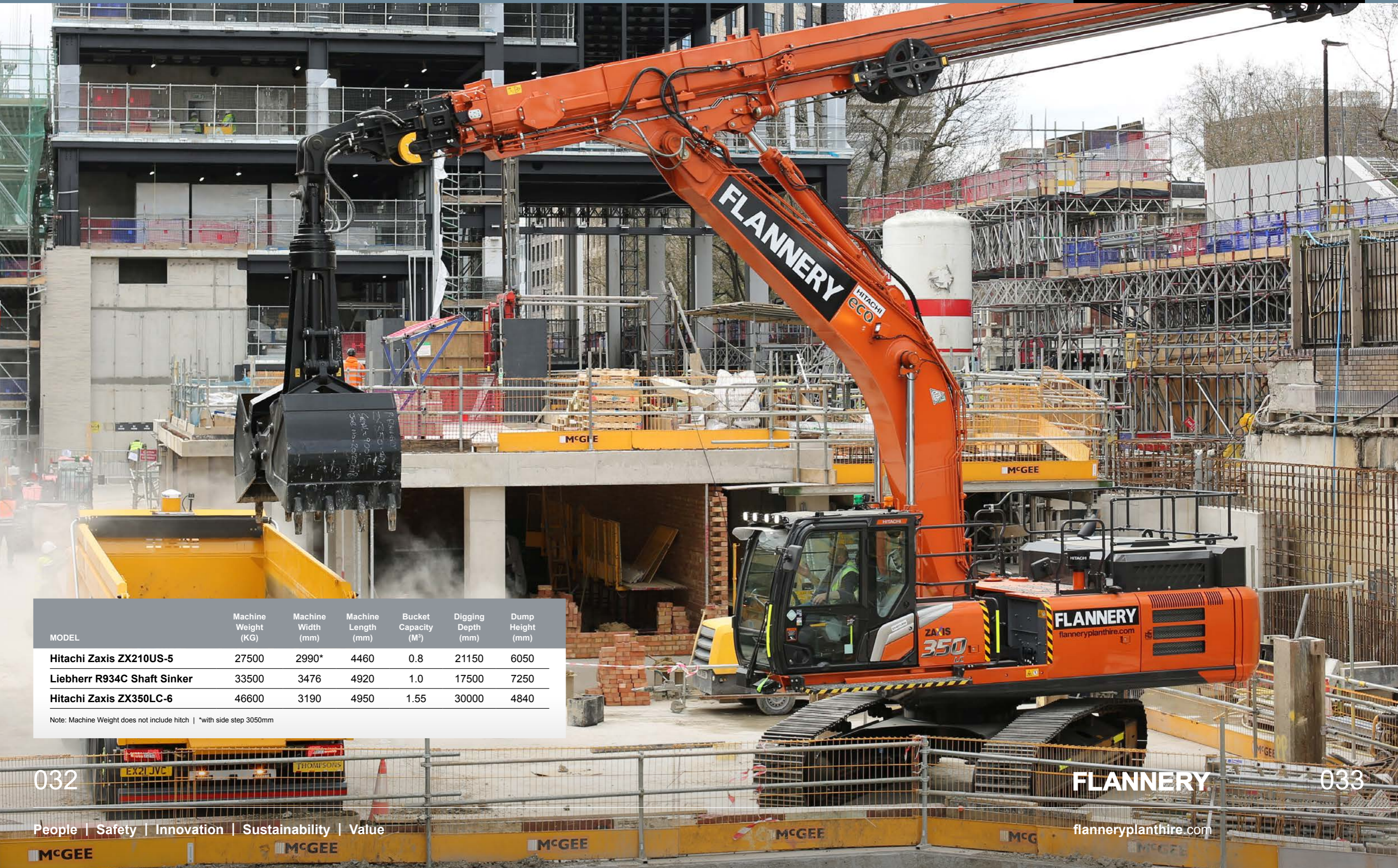
Note: Machine Weight does not include hitch



# Clamshell Telescopic Excavators

**FLANNERY - VALUE ADDED**

The UK's largest fleet of specialist machines for deep excavation.



MODEL	Machine Weight (KG)	Machine Width (mm)	Machine Length (mm)	Bucket Capacity (M <sup>3</sup> )	Digging Depth (mm)	Dump Height (mm)
Hitachi Zaxis ZX210US-5	27500	2990*	4460	0.8	21150	6050
Liebherr R934C Shaft Sinker	33500	3476	4920	1.0	17500	7250
Hitachi Zaxis ZX350LC-6	46600	3190	4950	1.55	30000	4840

Note: Machine Weight does not include hitch | \*with side step 3050mm

# Backhoe Loaders

## FLANNERY - VALUE ADDED

Hammer lines are fitted as standard to all excavators - giving you maximum flexibility when using attachments.

MODEL	Machine Weight (KG)	Machine Width (mm)	Machine Height (mm)	Digging Height (mm)	Dump Height (mm)	Digging Depth (mm)	Digging Reach (mm)
<b>JCB 3CX Contractor</b>	8070	2230	3610	6200	4670	5460	6540
<b>Cat 432F2</b>	8479	2352	3779	5692	4025	4753	4654

Note: Machine Weight does not include hitch



# Articulated Dump Trucks

## FLANNERY - VALUE ADDED

Hard-wired inclinometers are fitted as standard to all tipping ADTs of 25T and above.



Bell B30E Water Bowser

MODEL	Machine Classification	Machine Length (mm)	Machine Width (mm)	Machine Height (mm)	Unladen Weight (KG)
Hydrema Straight Tip	10T	5820	2470	2790	7330
Hydrema Swivel Tip	10T	5940	2470	2750	7270
Bell B20E	20T	9271	2550	3595	15260
Hydrema 922G	20T	9170	2930	3490	15900
Volvo A25G	25T	10218	2915	3356	22700
Cat 725	25T	9920	2275	3440	22260
Cat 730	28T	10593	2984	3508	23900
Bell B30E	28T	9953	3268	3747	20310
Bell B30E Water Bowser	27000 L	10590	2985	3747	19310
Cat 730 Ejector	30T	10376	3082	3751	26210
Volvo A30G	30T	10296	2954	3366	23600
Cat 740B	40T	11698	3527	3984*	34393
Cat 745	45T	11429	3530	4041	33400
Volvo A45G	45T	11429	3530	4041	33400
Bell B45E	45T	11263	3430	3599	31100

\*Hinged spill plate for transportation

# Dumpers

## FLANNERY - VALUE ADDED

Radar sensing units plus front and rear cameras are available on Flannery Dumpers.

MODEL	Machine Classification (Payload)	Machine Length (mm)	Machine Width (mm)	Machine Height (mm)	Unladen Weight (KG)
Thwaites	1T Hi-Tip (Skip Loader)	3192	1115	1773*	1295
Wacker Neuson	1.5T Swivel Tip	3220	1305	1960*	1261
Thwaites	3T Swivel Tip	3934	1650	1981*	2250
Wacker Neuson	3T Swivel Tip	3786	1730	1913*	2410
Mecalac	3.5T Swivel Tip	3930	1846	2919	2380
Thwaites	6T Swivel Tip	4815	2280	2230*	4540
Wacker Neuson	6T Swivel Tip	4934	2230	2230*	4919
Wacker Neuson	6T Dual View Swivel Tip	4699	2230	2940	4320
Thwaites	9T Swivel Tip	5047	2440	2630*	5690
Thwaites	9T Straight Tip	4670	2485	2555*	4870
Wacker Neuson	9T Straight Tip	4780	2250	2354*	5228
Wacker Neuson	9T Dual View Straight Tip	4662	2420	2945	4614
Wacker Neuson	9T Dual View Swivel Tip	4891	2420	2945	4944
Wacker Neuson	10T Dual View Straight Tip	4660	2420	3382	4644

\*With ROPS bar folded down



# Tracked Dumpers

## FLANNERY - VALUE ADDED

Specialist tracked earthmoving equipment - ideal for use when the ground is very soft.



A Flannery subsidiary company



MODEL	Body Type	Machine Weight (KG)	Machine Width (mm)	Machine Height (mm)	Machine Payload (KG)
Morooka MST-300VDR	Swivel	2710	1745	2330	2500
Yanmar C50R-5TV	Swivel	6042	2200	2730	3500
Morooka MST-800VD	Rigid	7200	2455	2710	5000
Morooka MST 1500VD	Rigid	10900	2650	2910	7000
Morooka MST 1500VDR	360 Rotating	11500	2640	3070	7000
Morooka MST-2200VD	Rigid	14100	2850	3170	11000
Morooka MST-220VDR	360 Rotating	16000	2980	3200	11000
Prinoth Panther T14R	360 Rotating	16860	2570	3214	13,200

Equipped with machine control systems from leading manufacturers, Leica or Topcon.



MODEL	Power Rating Category	Blade Capacity (M³)	Machine Weight (KG)	Machine Width (mm)
Cat D2 Next Gen (formerly D4K)	85hp +	1.98	8338	2010
Cat D4K LGP	85hp +	1.85	8510	3149
Cat D3 Next Gen (formerly D5K)	100 hp +	2.19	9362	2110
Cat D5K LGP	100 hp +	2.34	9646	3220
Cat D5 Next Gen LGP VPAT (formerly D5K)	160 hp +	4.0	19170	3000
Cat D6N LGP	160 hp +	3.9	18436	3706*
Komatsu D61PXI-24	160 hp +	3.8	19580	2980*
Komatsu D61PX-23	160 hp +	3.8	19460	2990
Cat D6 XE Electric Drive (formerly D6T)	200 hp +	5.7	22130	3312
Cat D6 XE Electric Drive VPAT (formerly D6T)	200 hp +	4.1	22548	3680
Cat D6 XE Electric Drive LGP (formerly D6T)	200 hp +	3.8	23911	4063
Cat D6T LGP	200 hp +	4.64	24336	4063
Komatsu D65-PXi-18	200 hp +	3.69	22970	3970
Komatsu D85-PXi-18	260 hp +	5.9	29520	4355
Cat D8	320 hp +	10.3	39750	4042
Cat D9	405 hp +	13.5	48361	4310

\*With blade fully angled

### CAT DOZER NAMES HAVE CHANGED...



# Graders

## FLANNERY - VALUE ADDED

Our operators have familiarisation and ongoing competency checks carried out by our fully qualified CPCS plant trainers.

MODEL	Base Power (HP)*	Operating Weight (KG)	Moldboard Width (mm)	Machine Height (mm)	Machine Length (mm)**	Machine Width (mm)
Cat 14M3	238	25968	4300	3566	10910	3050
Cat 16M3	290	32411	4900	3719	12051	3411

\* First Gear (Net) | \*\*Counterweight to Ripper



# Wheeled Loaders

## FLANNERY - VALUE ADDED

Hi-vis steps and white noise reversing alarm are two of the standard safety features.



MODEL	Bucket Size (M³)	Machine Height (mm)	Machine Width (mm)	Machine Length (mm)	Machine Weight (KG)
<b>Volvo L90H</b>	2.3	3280	2490	7600	15560
<b>Hitachi ZW220</b>	3.3	3370	2910	8345	18180
<b>Cat 950GC</b>	3.3	3458	2994	8292	18849
<b>Hitachi ZW250</b>	3.4	3400	2980	8495	20320
<b>Cat 962M</b>	3.6	3447	2927	8692	20226
<b>Doosan DL380-7</b>	3.9	3511	2845	8652	20587
<b>Doosan DL420-7</b>	4.5	3660	2982	9510	23990
<b>Volvo L180G</b>	4.6	3590	2960	9010	26500
<b>Cat 980M</b>	5.7	3813	3447	9493	30090
<b>Volvo L220H</b>	5.2	3580	2960	7480*	32810
<b>Doosan DL550-7</b>	5.7	3863	3199	9912	23990
<b>Cat 988K</b>	6.9	4498	3897	12204	52576

\* to front of carriage



Through frequent asset renewals, you are assured we operate a modern, reliable and sustainable hire fleet.



MODEL	Machine Classification	Machine Weight (KG)	Machine Width (mm)	Machine Length (mm)	Machine Height (mm)	Lift Height (mm)	Lift Capacity Full Height (KG)	Forward Reach (mm)
JCB 516-40	4M	3420	1560	3230	1800	4045	1600	2535
JCB 520-40	4M	4400	1560	3380	1970	4035	2000	2590
Faresin 6.26 (Electric)	5.9M	4800	1890	4035	1935	5900	2600	3200
JCB 525-60E (Electric)	6M	5200	1840	4000	1890	6000	2000	3500
JCB 525-60	6M	5490	1840	4000	1890	6000	1750	3006
JCB 535-95	9.5M	8020	2290	4990	2490	9500	1600	6520
JCB 535-140	14M	10880	2350	6230	2590	13780*	3500*	9600*
JCB 540-140	14M	10858	2350	6250	2590	13800*	4000*	9250*
JCB 540-170	17M	12060	2440	6360	2690	16700*	4000*	12500*
Faresin 17.40 (Electric)	17M	12100	2331	6520	2500	16400*	4000*	12600*
JCB 540-200	20M	12985	2440	6810	2720	20000*	1500*	15900*

Note: machine lengths are to front of carriage | \* with stabilisers down



# Tractors & Bowsers

## FLANNERY - VALUE ADDED

Flannery can provide a wide range of trailers as well as water bowsers.

MODEL	Machine Weight (KG)	Machine Width (mm)	Machine Height (mm)	Rated Power (BHP)
John Deere XUV865M Gator	1001	1763	1987	22.8
Case Maxxum 125	4890	2470	3025	135
Case Maxxum 150	4890	2470	3025	158
John Deere 6155M	5929	2490	2970	145
John Deere 6195M	7500	2550	3040	196
New Holland T7.230	6350	2350	3040	180
New Holland T7.245	7300	2460	3110	200

MODEL	Max Capacity (Litres / KG)	Weight Unladen (KG)	Width (mm)	Height (mm)	Length (mm)
Major 2200LGP Water Bowser	10228 L	4050	2400*	3200*	6500
Fuel Proof 8000L Site Tow Fuel Bowser with 1000L AdBlue Tank	9000 L	4195	2739*	2871*	6733
JPM 2 Axle Low Loader Trailer	19000 KG	4500	2550	950**	8000
JPM 3 Axle Low Loader Trailer	19000 KG	6000	2550	950**	9500
Pronar 2 Axle Hook Lift Trailer	17100 KG	5900	2550	2990	7870
Bailey 24ft Flatbed Trailer	19000 KG	4000	2550	950**	8000

\*Approx - depends upon tyres specified \*\*Deck height



# Rollers

## FLANNERY - VALUE ADDED

Machine telematics are available across the fleet to give you the data to make the right decisions.

MODEL	Machine Classification	Drum Width (mm)	Machine Width (mm)	Machine Length (mm)	Machine Weight (KG)
<b>Cat CB24B</b>	Tandem	1200	1312	2575	2723
<b>Dynapac CC1200</b>	Tandem	1200	1310	2395	2600
<b>Bomag BW 120 AD-5</b>	Tandem	1200	1272	2529	2700
<b>Wacker Neuson RD40-130</b>	Tandem	1300	1426	2860	3965
<b>Bomag BW 135 AD-5</b>	Tandem	1300	1390	2840	4000
<b>Volvo SD135B</b>	Self Propelled	1676	1830	5044	12700
<b>Atlas Copco CA3500D</b>	Self Propelled	2130	2304	5990	12100
<b>Cat CS64B</b>	Self Propelled	2134	2330	5850	12055
<b>Cat CS66B</b>	Self Propelled	2134	2330	5860	12360
<b>Bomag BW 213 D-5</b>	Self Propelled	2130	2270	5870	12600
<b>Bomag BW 216 D-5</b>	Self Propelled	2130	2300	6220	16000
<b>Cat CS78B</b>	Self Propelled	2134	2460	6130	18700
<b>Bomag BW 219 D-5</b>	Self Propelled	2130	2300	6500	19400

NB: Machine Weight does not include hitch



# Attachments

At Flannery we're always looking for ground-breaking innovations we can bring to our customers.

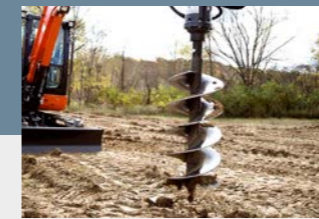
The Brextor Pile Head Mill is just such an innovation, enabling the safe and highly efficient trimming of concrete piles without risk to the remaining section of pile or its reinforcement.

The attachment can be configured on-site to deal with piles of different sizes quickly and effectively.

As an example of its efficiency, Brextor can remove 100cm of height from a 100cm diameter pile in just 1 hour!



Read the Brextor Case Study here.



Auger



Flail Mulcher



Multi-Processors



Pulveriser - Static



Bucket - Crusher



Grab - Clamshell



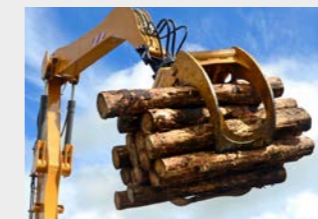
Pallet Forks



Pulveriser - Rotating



Bucket - Reed Cutting



Grab - Log



Patch Planer



Rock Wheel



Bucket - Screening



Grab - Pole



Pile Cutter



Shear



Bucket - Shaker



Grab - Selector



Piling Hammer



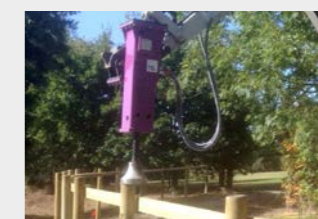
Tilt-Rotator Hitch



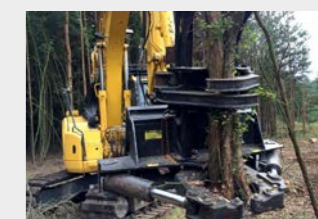
Compactor Plate



Hydraulic Hammer



Post Knocker



Tree Shear

# Demolition Industry



## Demolition Industry Service Provider



Our services include the supply of demolition specification equipment to leading demolition contractors to undertake dismantling, site clearance and slab breaking on a self-drive or operated basis. Demolition specific plant comes with full cab guards and cages, heavy duty belly plates, side skirts, and ram guards. Flannery can also supply Crushers and Screeners to recycle materials on site.



# Rail Industry

## Off-track rail plant & attachments

Flannery Plant Hire is a RISQS certified plant hire provider with a full range of equipment and services available for any rail project.

Providing 24-hour machine availability and on-site fitters for ALO compliant off-track rail plant and attachments complete with height and slew restrictors, RCI (visual lifting indicators), rubber tracks, track locks, 360-degree cameras and remote banksman (MC/CC) cut out.

Our Plant Operators have full PTS, CPCS and attachment training certification.



We have available a large fleet of off-track rail equipment which is fitted with the following:

- Slew Restrictors and Height Restrictors
- Remote Banksman (MC/CC) Cut Out
- RCI (Visual Lifting Indicator)
- 360° Vision Cameras
- Rubber Tracks

